

a2o



a2o

**Four studios.**

**One mission.**

<b>08 – 09</b>	Space
<b>10 – 19</b>	Mission
<b>20 – 25</b>	a2o architecture
<b>26 – 33</b>	a2o field
<b>34 – 37</b>	a2o detail
<b>38 – 41</b>	a2o radar
<b>42 – 46</b>	Team



**Space is the stage  
where everyday life  
plays out, where  
communities flourish  
and stories unfold.  
This is why 'everyone'  
claims it.**



Space is a scarce commodity. Moreover, there are always multiple parties claiming it. Whether it be public or private.

And once that scarce space is (finally) taken, this gives it a long-term, specific purpose. In a well-demarcated environment, to which the new purpose is inextricably connected.

On top of that, all stakeholders - users and non-users - associate that new purpose with individual expectations. And are confronted with the individual expectations of others.

As such, handling space becomes a subtle, permanent quest for balance and added value. Balancing the dialogue between a building and the space that surrounds it. Balancing the wishes, needs and expectations of all stakeholders. Added value in the impact of the intervention on the community. Today, as well as far into the future.

Based on that philosophy, a2o consider it their mission to not only build, but also forge a connection between people and their surroundings. To engage in respectful dialogues between private and public, between tradition and future, between culture and nature.

For that reason, a2o designs urban spaces as ecosystems, devised to stand the test of time and adapt to new needs and opportunities. According to that vision, construction doesn't go against nature, but is realised in conjunction with nature. By returning it to the heart of the urban environment, nature receives a prominent role in every project from the very first sketch.



**a2o's mission is to design space that respects and strengthens cultural and historic values, in order to create long-lasting added value for the community.**

**a2o views architecture as a cultural act that reaches beyond the physical building: it is a reinforcement of the socio-cultural fabric around its location.**







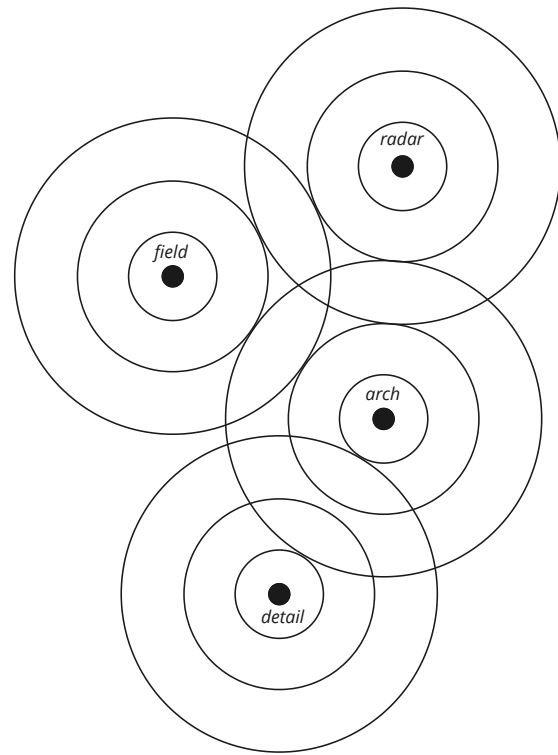


### **a2o architecture**

Appropriate spatial interventions with smart structures and hybrid programmes.

### **a2o field**

Designing spaces that embrace the resilience of nature as well as cohabitation in urban and more rural environments.



### **a2o detail**

Connections between user, architecture and environment through sustainable interior design.

### **a2o radar**

Addressing social challenges with space as a key to solutions.

**Every studio within a2o acts as an incubator for innovation, collaboration and in-depth expertise when it comes to space.**

**Collectively, they form a unique and recognisable network of knowledge and skills.**





a2o creates sustainable spaces in the form of buildings, interiors, urban environments and landscapes. Always with an impact.

To succeed in this regard, the organisation rests on a vibrant networks of professionals, creatives and experts who share a common vision and passion for excellence.

Internally, those networks are structured into four specialised studios: architecture, field, detail and radar.

Each studio nurtures their talent and develops innovative concepts. But it is precisely in the confrontation across disciplines that additional layers emerge and boundaries are pushed.

Externally, this dynamic fabric is reinforced with specific knowledge and expertise. Or with forms of artistic freedom that help them go beyond comfort zones and beaten paths.

This creates designs that are as flexible and resilient as nature, in view of a life that spans multiple generations. As such, they answer a concrete question or meet a concrete need today, while remaining of fundamental value into the distant future.





Challenging Modernism summer workshop - Brussels, 2022



## a2o architecture

designs appropriate spatial  
interventions with smart structures  
and hybrid programmes.

Buildings by a2o architecture involve spaces that are in a constant dialogue with time. Their architecture is a tribute to the past, a reaction to the present and a preview of the future.

Over the years, the expertise has expanded in terms of breathing new life into historic buildings, transforming existing structures and revitalising inner cities while respecting their heritage.

Projects by a2o are never limited to structures; they are smart, hybrid programmes that go beyond the current requirements and aim for an improved quality of life for communities they serve. Timeless, functional and inspiring.



Exploratory design Bonnefant

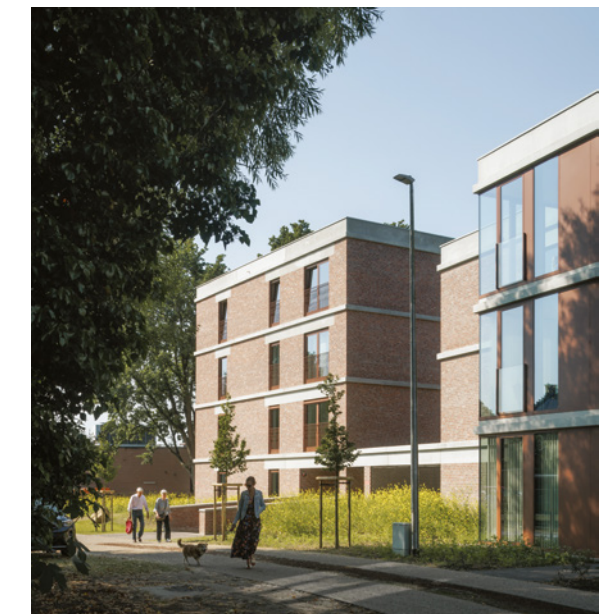
Resilient, adaptive structures, ready to be transformed and reused for generations to come, while taking future needs into account.

We aim to realise architecture in the context of time: past, present and future.

We create buildings that are a continuation of the story from the past - a significant part of our portfolio involves the reuse of built heritage, the transformation of buildings and urban renovation in inner cities.

Our designs fit the requirements of the present and we specifically look beyond the desires formulated in the programme to improve the quality for the community as a whole.

We anticipate future needs by aiming for resilient structures that can be easily transformed and reused. We cultivate our expertise in the area of visualisation, BIM modelling and digital communication.



Achter de hoven - Zonhoven





Chocoladefabriek - Nerem



Sionsite - Lier



Pacheco - Brussels



Crematorium Stuifduin - Lommel



Virga Jesse-College - Hasselt



Kruitfabriek - Vilvoorde



Angelahof - Diepenbeek



Clarenhof - Hasselt



*Buildings and spaces by a2o architecture are resilient, designed to grow along with their communities and to embrace new functions long after their original purpose has expired.*

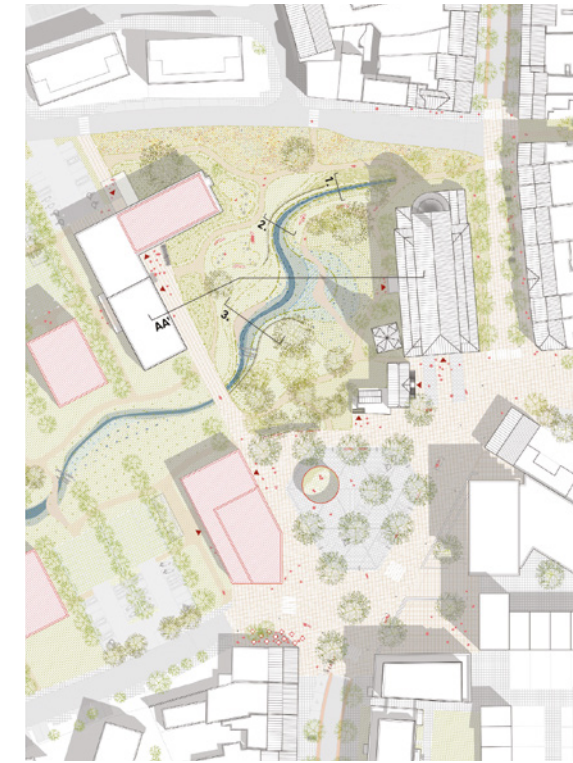


Straf! School met taf. - Beringen



## a2o field

shapes spaces that embrace the resilience of nature and cohabitation in urban and landscape environments.



Village centre - Zonhoven

a2o takes a pioneering role by designing spaces that embrace the resilience of nature and cohabitation in urban and landscape environments. Their designs are the result of in-depth research into the inherent qualities of each space, enriched by an interdisciplinary approach that will respect the cultural and historic identity.

To a2o field, nature is not just a backdrop, but an integral part of life.

This translates into designs that aim to support and restore natural ecosystems, giving rise to harmonious coexistence between people and nature. This is sustainable as well as systemic, and contributes to a thriving and resilient living environment.



Redevelopment R0 - Zaventem





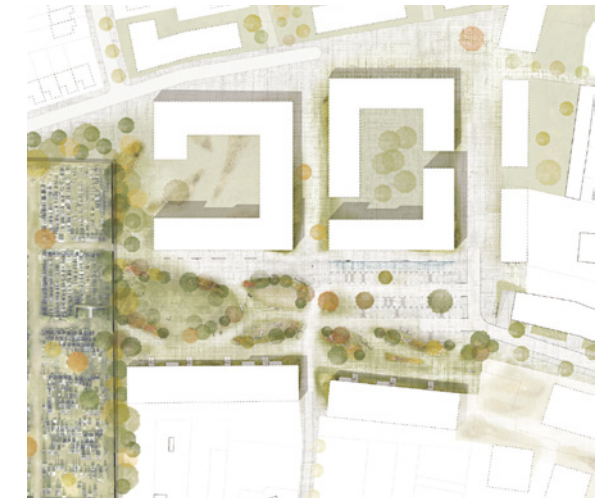
Fruitspoor - Sub-project Borgloon Station



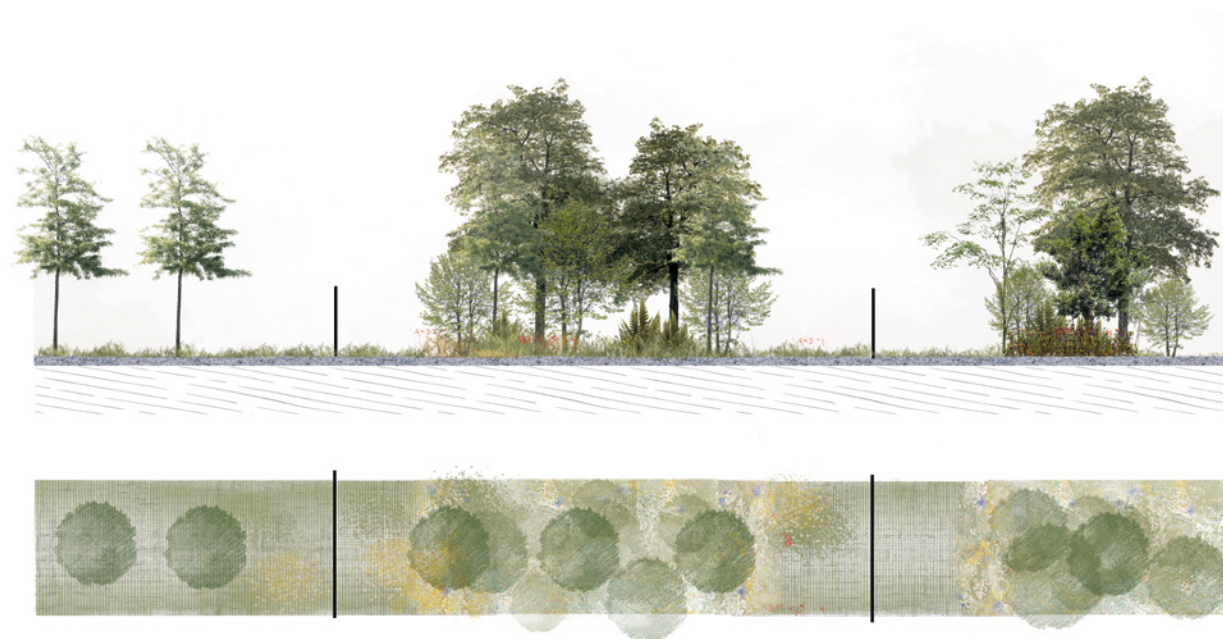
Sint-Anna - Sint-Truiden



Public space design - Groot-Bijgaarden



Greening the city centre - Tessenderlo



Landscape design PXL building B - Hasselt



*Creating worlds where people once again feel connected to the natural habitat that surrounds them, which is what a2o field always aims for. Co-living is not just a trendy concept, but a lived experience.*







Softening V110 - Bergloon



## a2o detail

connects users, architecture and the environment with sustainable interior design.



Avansa - Hasselt

a2o detail uses the power of thoughtful/refined interior design to enable users to truly make spaces their own. And to create a seamless transition between personal spaces and the outside world. This applies to both the intimate interiors of buildings and to public, shared spaces.

Thanks to a carefully developed scenography, a2o detail anchors the human measure in a constantly changing world. Their sustainable interior design goes far beyond aesthetics, lifestyle and functionality. It is an essential link that connects people, architecture and the environment in a natural way.



House HH - Belgium

This approach to interior design ensures that each layer of a building can lead its own life, which is necessary to ensure its flexibility and circular potential.



Generalate Ursuline cloister - Hasselt



De Dialoog - Hasselt



De Dialoog - Hasselt



Chapel Ursuline cloister - Hasselt



House Be - Belgium



Mercier - Mechelen



Timelab - Ghent



House Be - Belgium



## a2o radar

tackles social challenges with space  
as a key to solutions.



Participation workshop Pauwengraaf Maasmechelen



Timelab - Ghent

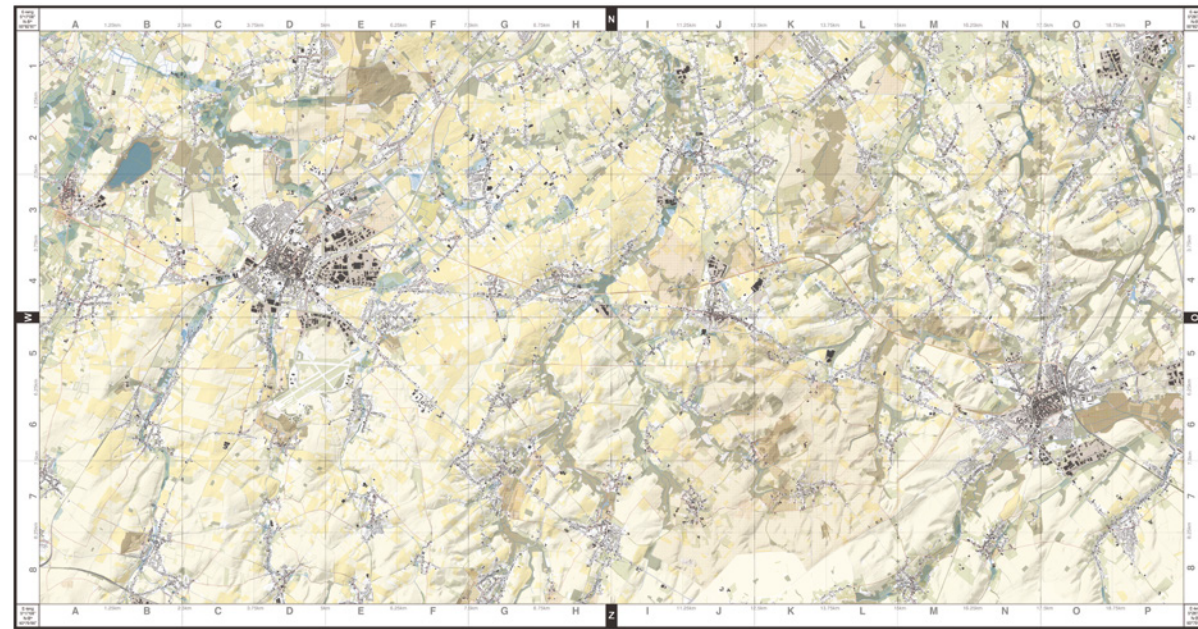
a2o radar formulates answers to social challenges with a spatial component. To that end, the team coaches several clients - from owners to developers and policymakers - in seeking solutions for spatial issues. Preferably long before a programme of requirements has been drawn up or concrete plans are on the table.

a2o radar's process is based on in-depth design research in co-creation with all stakeholders. The independent, professional but above all open outsider perspective invariably leads to surprising insights and innovative spatial scenarios. As well as to concrete programmes for complex buildings or environments for which the sustainable re-zoning is not self-evident.

a2o radar takes an active - and sometimes even activist - stance in the various stages of spatial planning and policymaking. This is how they intend to weigh in on the decision-making process in projects with a far-reaching, long-term impact on our living environment. And want to help to provide timely concrete spatial scenarios for abstract challenges, including climate change, demographic trends, urbanisation, sustainable mobility, nature conservation biodiversity, etc.



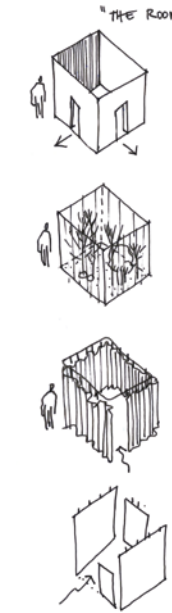
By taking a different perspective on spatial scenarios, a2o radar offers insightful, practical solutions for the challenges of today and tomorrow.



Study 'Most beautiful villages of Haspengouw'



Proximus Towers re-zoning study - Brussels



Participation workshop Werkplaats – Aarschot



Repurposing  
St. John the Evangelist Church  
(Peperbus) - Antwerp



Minderbroedersite re-zoning study - Sint-Truiden



Co-creation workshop Werkplaats – Aarschot



Vaartkom - Wilsele



## a2o team

A multidisciplinary team of professionals with complementary areas of expertise and skills, connected by shared ideals and values.



Study tour Rotterdam, 2023

a2o approaches the fascinating world of architecture, interior design, urban planning and landscape design with an interdisciplinary team of experts, creatives and other inspired professionals.

Collectively, they make up an 'open research space' where ideas come to life based on experimentation and concept development. And where spatial transitions are realised based on thoughtful design and meaningful innovation.

The headquarters of a2o in Hasselt is a unique redevelopment project of an old grain mill, where other creative entrepreneurs and cultural organisations have found a home. With its Brussels office, the firm sits in the heart of the vibrant capital of Europe, where they maintain an intimate feel for metropolitan challenges.

An up-to-date overview of the a2o employees can be found at [a2o.be/contact](https://a2o.be/contact)



*a2o merges versatile and diverse talent into one dynamic design team. A multitude of complementary skills, united by shared ideals and values, that bring each project to life.*



Kruitfabriek - Vilvoorde, 2022



Buildings and spaces by a2o architecture are resilient, designed to grow along with their communities and to embrace new functions long after their original purpose has expired.

Creating worlds where people once again feel connected to the natural habitat that surrounds them, which is what a2o field always aims for. Co-living is not just a trendy concept, but a lived experience.

Thanks to a carefully developed scenography, a2o detail's sustainable interior design goes well beyond aesthetics, lifestyle and functionality. It is an essential link that connects people, architecture and environments in a natural way.

By approaching social challenges from a spatial perspective, a2o radar offers insightful, practical solutions to the challenges of today and tomorrow.

a2o merges versatile and diverse talent into one dynamic design team. A multitude of complementary skills, united by shared ideals and values, that bring each project to life.



# Visuals

## a2o

- Visual representation studios a2o ..... p. 14
- Exploratory design Bonnefant ..... p. 21
- Gunpowder factory - Vilvoorde ..... p. 22
- Pacheco - Brussels ..... p. 23
- Village centre - Zonhoven ..... p. 27
- Fruitspoor - Sub-project Borgloon Station ..... p. 28
- Landscape design PXL building B - Hasselt ..... p. 28
- Sint-Anna - Sint-Truiden ..... p. 29
- Public space design - Groot-Bijgaarden ..... p. 29
- Greening the city centre - Tessenderlo ..... p. 29
- Softening Veemarkt - Sint-Truiden ..... p. 30
- Softening VIIO - Borgloon ..... p. 32
- Mercier - Mechelen ..... p. 37
- Study 'Most beautiful villages of Haspengouw' ..... p. 40
- Repurposing St. John the Evangelist Church (Peperbus) - Antwerp ..... p. 40
- Participation workshop Werkplaats – Aarschot ..... p. 41
- Vaartkom - Wilsele ..... p. 41
- Co-creation workshop Werkplaats – Aarschot ..... p. 41
- Kruitfabriek - Vilvoorde ..... p. 44

## ArtefactoryLab

- Redevelopment R0 - Zaventem ..... p. 27

## Brecht Kelleneers Fotografie

- Study tour Rotterdam, 2023 ..... p. 43

## Evenbeeld

- Ursulinenhof - Hasselt ..... p. 10
- Avansa - Hasselt ..... p. 35
- House HH - Belgium ..... p. 35
- Generalate Ursuline cloister - Hasselt ..... p. 36
- De Dialoog - Hasselt ..... p. 36

## Kristof Vrancken

- De Silo - Hasselt ..... p. 12

## a2o/multiple

- Proximus Towers re-zoning study - Brussels ..... p. 39

## Stijn Bollaert

- Timelab - Ghent ..... p. 16, 37, 39
- Achter de hoven - Zonhoven ..... p. 21
- Chocoladefabriek - Nerem ..... p. 22
- Sionsite - Lier ..... p. 22
- Virga Jesse-College - Hasselt ..... p. 22
- Crematorium Stuifduin - Lommel ..... p. 23
- Clarenhof - Hasselt ..... p. 23
- Angelahof - Diepenbeek ..... p. 23
- Straf! School met lef. - Beringen ..... p. 24
- Chapel Ursuline cloister - Hasselt ..... p. 36
- House Be - Belgium ..... p. 37
- De Silo - Hasselt ..... p. 47

## Valentine Van den Eynde

- Challenging Modernism summer workshop - Brussels, 2022 ..... p. 19
- Proximus Towers re-zoning study - Brussels ..... p. 39
- Participation workshop Pauwengraaf - Maasmechelen ..... p. 41

## Unknown

- Minderbroedersite re-zoning study - Sint-Truiden ..... p. 40

Image selection: a2o

Copywriting & Graphic design: Liswood & Tache

Translations: Elan Translations

Printing: Gewa

Edition: 2024

## **a2o Brussels**

Zaterdagplein 9  
B-1000 Brussels

T 0032 23 21 00 01  
W [a2o.be/contact](http://a2o.be/contact)

## **a2o Hasselt**

Vissersstraat 2  
B-3500 Hasselt

T 0032 11 26 03 30  
W [a2o.be/contact](http://a2o.be/contact)

